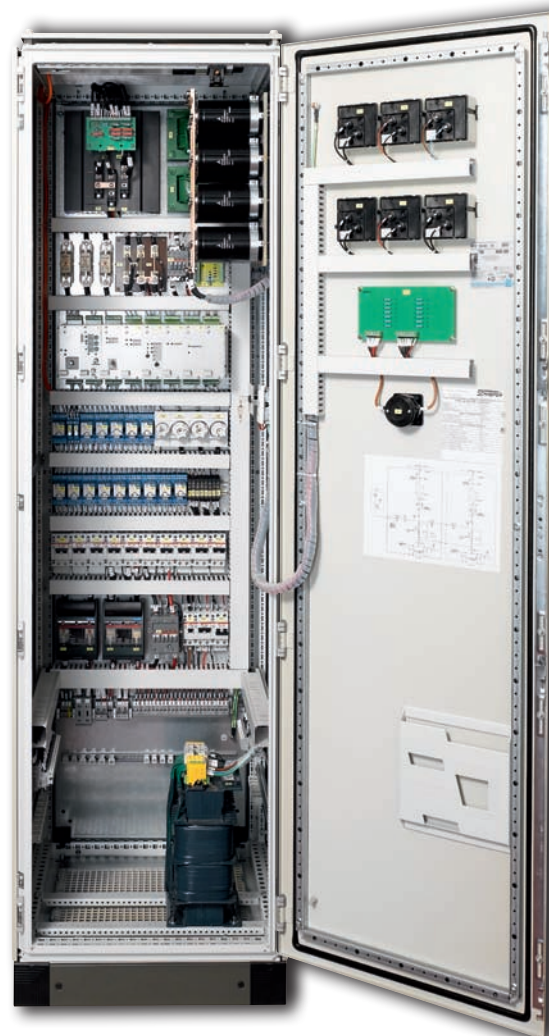


## Worlds largest water fountain @ Burj Khalifa in Dubai

### Building Services Engineering



These SCHAEFER charging systems are responsible for the operation and monitoring of the mechanical, electrical and public health systems required for the safe, comfortable and environmentally friendly operation of modern buildings like the Burj Khalifa skyscraper in Dubai.

Amongst others, these systems are installed for charging the largest fountains in the world as the centrepiece of its Downtown Burj Dubai project. The fountains are capable of shooting water over 150 metres into the air - the height of a 50-storey building - and stretch over 275 metres - the length of two football fields. The \$218 million project is 25 percent larger than the iconic fountains at the Bellagio hotel in Las Vegas.

- Turn-key customised designs: UPS systems within a cabinet inclusive battery equipment as well as various SMPS systems
- CAN/Ethernet interface for control and monitoring of electrical parameters
- Turn-key customised design
- Supervision and diagnostic software
- Enhanced mechanical integration
- Amongst others, Charging the integral water, light and sound show of the fountain
- UPS systems within a cabinet inclusive battery equipment as well as various SMPS systems
- Extreme Environmental Challenges: High level of reliability, redundant fault tolerant capability and tropical protection



For more information please contact: [mail@schaeferpower.de](mailto:mail@schaeferpower.de)

Picture „Burj Khalifa / Dubai Fountain“ © [neekoh.fi] – flickr.com

Picture „The Dancing fountains downtown and in a man-made lake in Dubai“ © [Poles] – fotolia.com