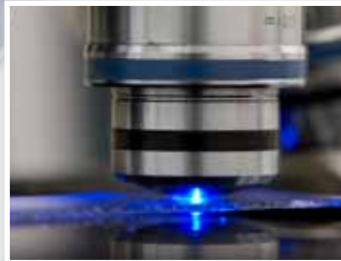


10kW high dynamic power supply

for harsh industrial applications e.g. laser, welding, automation



rear view

High dynamic switchmode Power Supply

www.schaeferpower.com

- **Input voltage:**
3 x 360 - 528V AC
or 480 - 750V DC
unit switches off at under-/ over voltage and phase loss
- **Output voltage & current rating:** programmable
30 ... up to 90V, 135Amps
- **Frequency:** AC-Version: 50/60Hz
or DC-Version
- **Output power:** 12.1kW



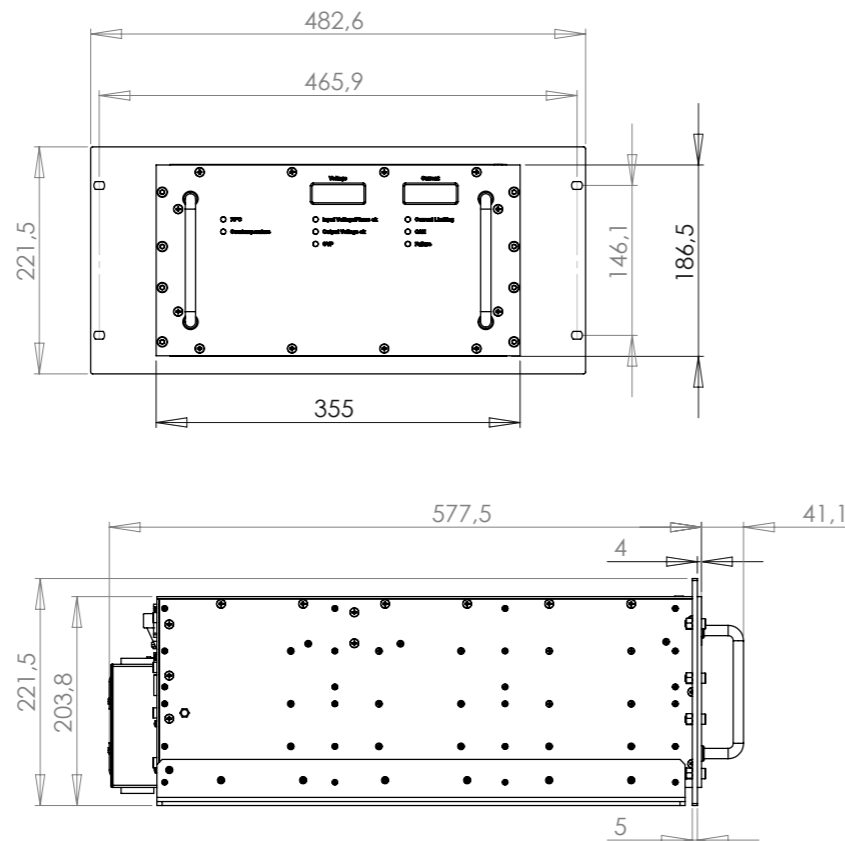
Applications

- **Laser industry:** pulse or injection locked lasers
- **Welding industry:** Micro electronic beam-, seam- & spot welding
- **Industrial automation:** cutting or drilling processes
- **Radar systems**

Features

- Outstanding pulse power
- wide input voltage range
- Maintenance free water cooled solution with at least 0.5g/pm or more
- Efficiency at full load: 90% typical
- Switching frequency: approx. 30kHz
- Isolation resistance: > 10MΩ at 500V DC
- High power density
- Hermetically sealed enclosure; protection category IP54 / NEMA 5 for harsh environment
- Emission acc. to EN 55011: 2009 + A1: 2010 + A2: 2001 group 1 class A
- Immunity acc. to EN 61000-6-2: 2005
- Safety / Construction acc. to EN 60950, class 1
- Operating temperature: -20°C to +50°C
- Free mounting position in all 3 axes
- Weight: 38kg

Dimensions incl. 19" mounting kit



Specifications

Input

| | |
|-------------------------|--|
| Input voltage | unit switches off at under-/ over voltage and phase loss |
| Frequency | AC-Version: 50/60Hz or DC-Version |
| Recommended input fuses | 3 x 35A slow, external |
| Inrush current | limiting by thyristor softstart |
| Connector | X1, HAN-Modular |

Output

| | |
|---------------------------|--|
| Output voltage & current | 30...78V/135A@U _{in} = 400V AC ±10% 30...80V/135A@U _{in} = 415V AC ±10% 30...86V/135A@U _{in} = 440V AC ±10% 30...90V/ 65A@U _{in} = 480V AC ±10% 30...78V/135A@U _{in} = 480...750V DC 30...90V/135A@U _{in} = 580...750V DC |
| Load & line regulation | 0.2% max. |
| Load transient (0-100-0%) | 1.5V max. |
| Overvoltage protection | OVP switches off module with automatic return to operation OVP adjusted to 110% of adjusted voltage programming value |
| Connector | X2, HAN-Modular 200A |

Option

- 19" mounting kit

Crowbar

| | |
|-----------------------------|---|
| Crowbar resistor | 2 x 7.33Ω (each 3 x 22Ω in parallel) |
| Discharge time | Depending on external capacitance |
| Internal output capacitance | approx. 116mF nominal |
| Function | Any internal switch off event activates the crowbar internally. The crowbar resistor can be also activated by an external connection. |
| Connector | X5, HAN Q5/0 Supplier: HARTING |

Interfaces

- CAN Bus
- Control LEDs
- Display LEDs (operation & diagnose mode)
- Analogue

Rear view



Your solution for pulse-load applications



SCHAEFER, Inc.

45 South Street, Hopkinton, MA 01748, USA

Tel: 508.435.6400

Fax: 508.435.6401

sales@schaeferpower.com

www.schaeferpower.com